

Import ACCDB (Access 2007) into Crystal Reports

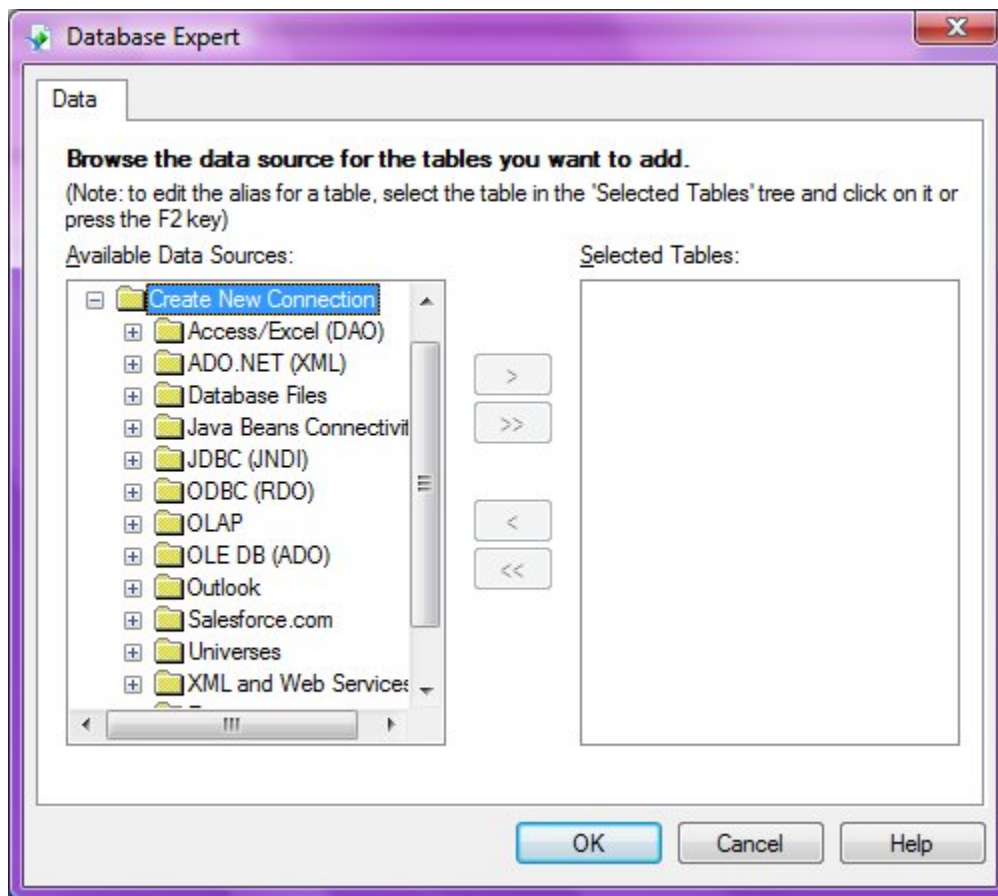
First, you need to install the "Access2007 Database Engine" onto the PC which has Crystal Reports

URL: <http://www.microsoft.com/downloads/details.aspx?familyid=7554F536-8C28-4598-9B72-EF94E038C891&displaylang=en>

Install the File "AccessDatabaseEngine.exe"

Once the file is installed, open Crystal Reports

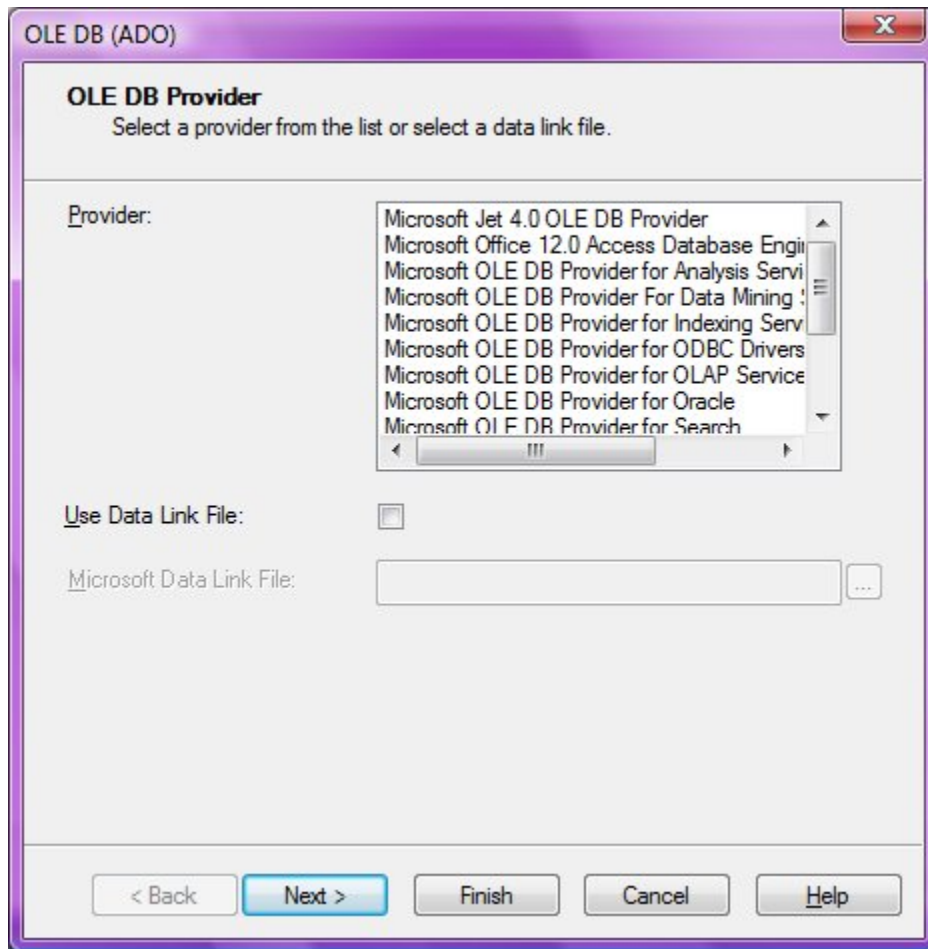
Start a New Report and you should get the Database Expert:



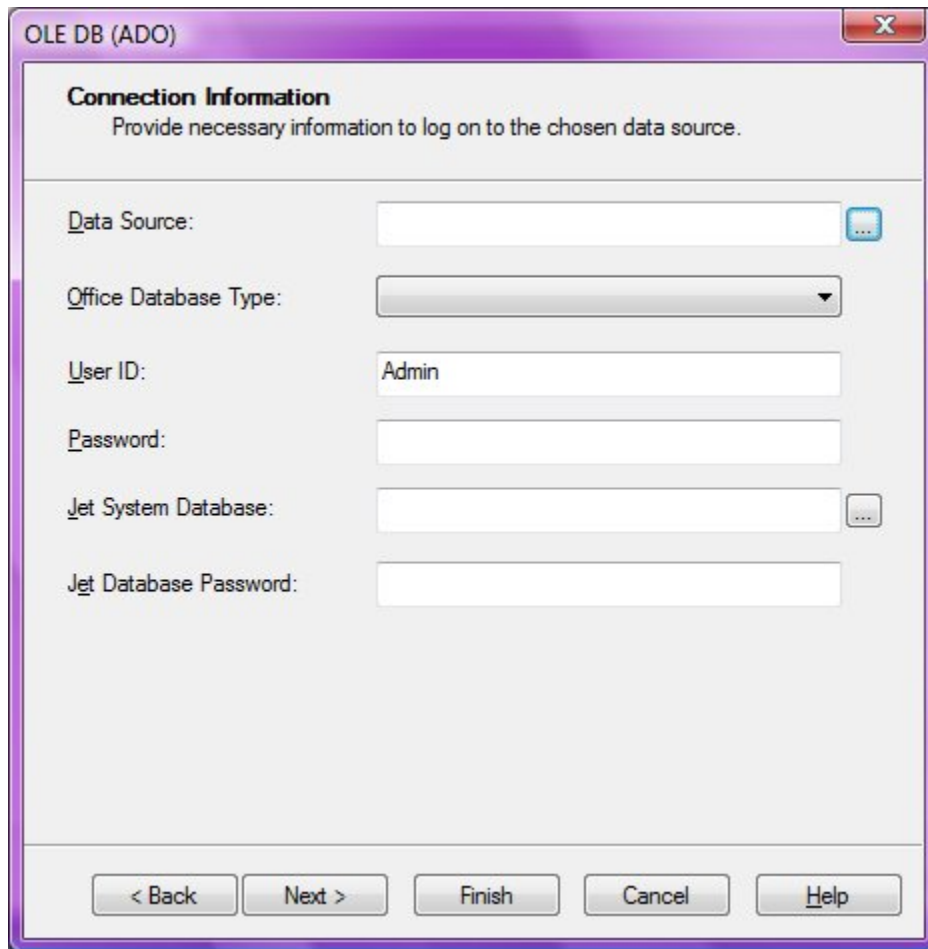
Do NOT Choose Access/Excel

Choose OLE DB

Once you choose OLE DB, then you will get this window:



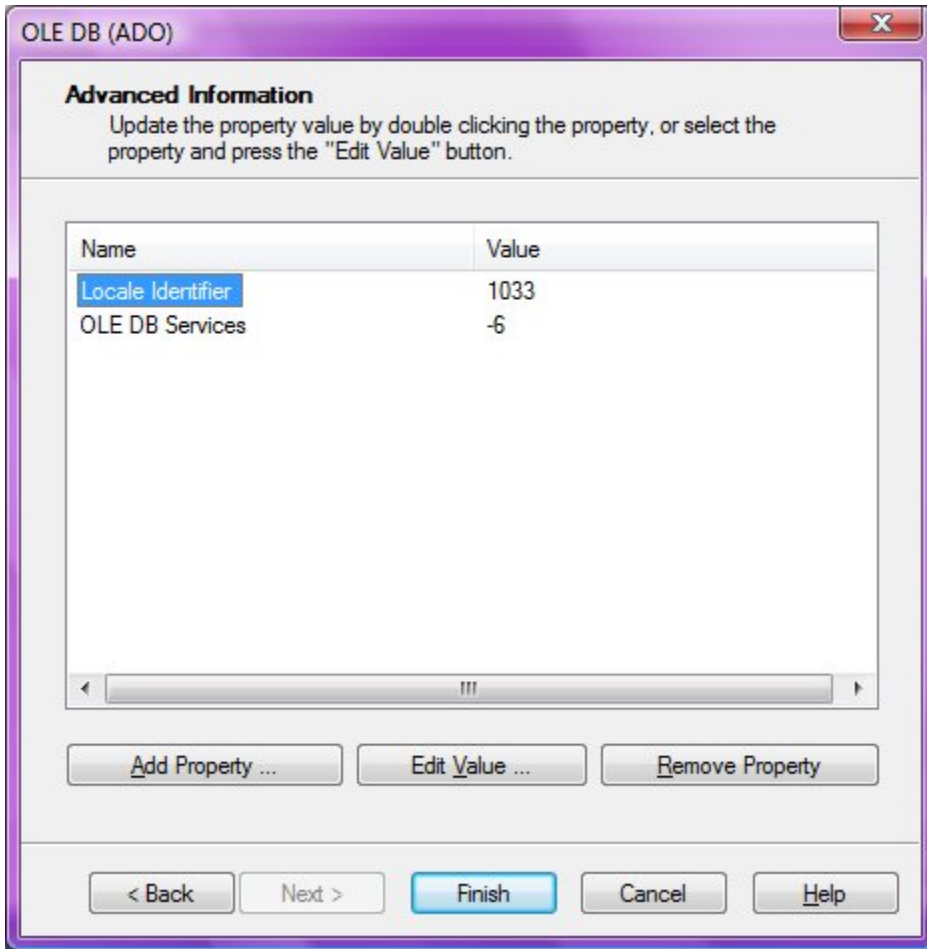
Select the Microsoft Office 12 Access Database Engine and hit NEXT



The image shows a Windows dialog box titled "OLE DB (ADO)" with a close button in the top right corner. The dialog is titled "Connection Information" and contains the instruction "Provide necessary information to log on to the chosen data source." Below this, there are several input fields: "Data Source:" with a text box and a browse button (...); "Office Database Type:" with a dropdown menu; "User ID:" with a text box containing the value "Admin"; "Password:" with an empty text box; "Jet System Database:" with a text box and a browse button (...); and "Jet Database Password:" with an empty text box. At the bottom of the dialog, there are five buttons: "< Back", "Next >", "Finish", "Cancel", and "Help".

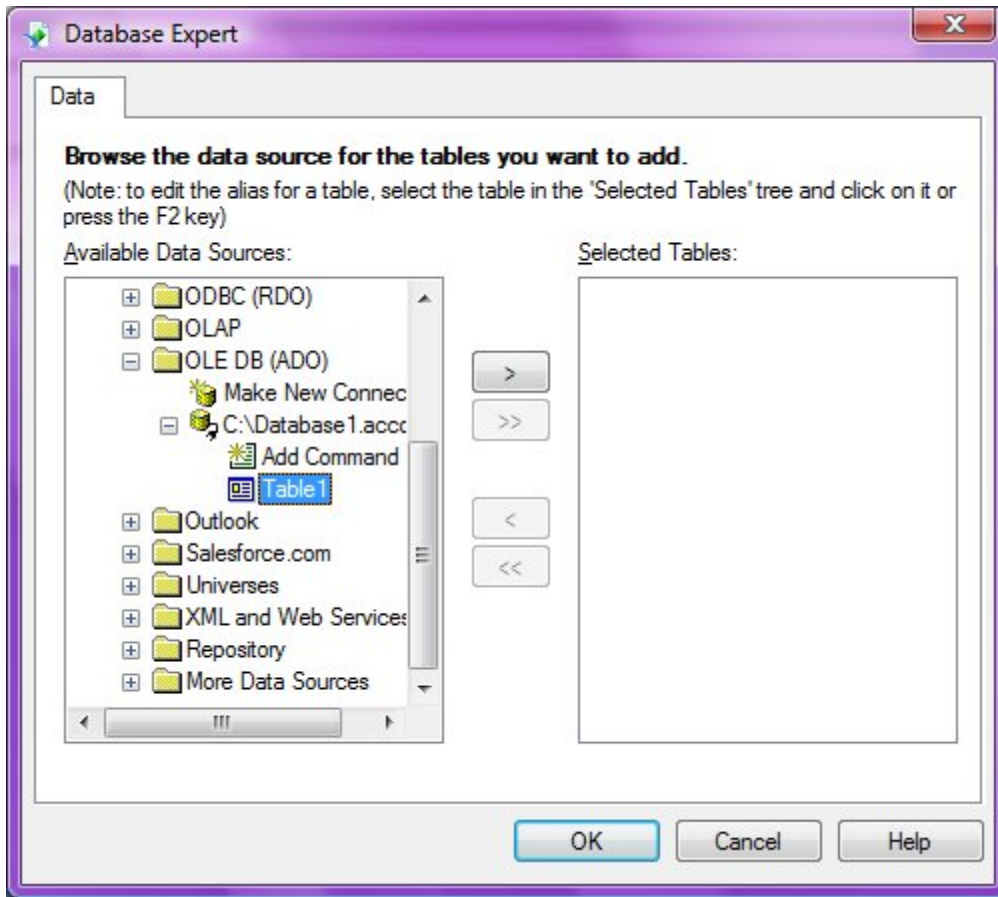
Use the browse button, to browse to your Access 2007 (accdb) database... Ignore User ID Fields and hit NEXT

If you get this window:



Just Hit FINISH

You should now have a window like this:



At this point, your ACCDB Database is finished and you can add fields like any MDB or Access 2003 Database