

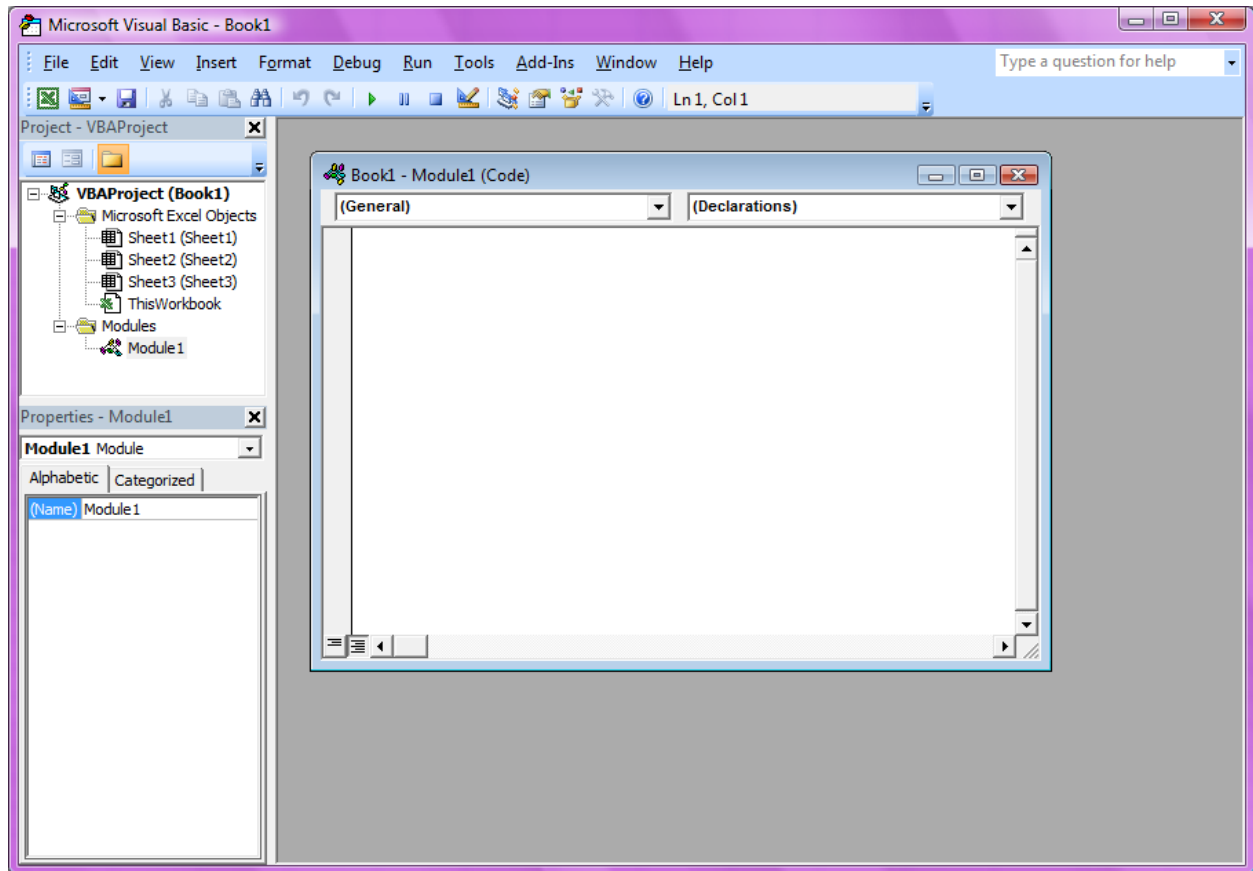
Create Your Own Excel Function:

Example: Velocity Equals Distance Divided by Time (In Other words: $V = D/T$)

We want to create a Function Called VELOCITY and it works like so:

=VELOCITY(Distance Cell or Value, Time Cell or Value)

In Excel on the Tools Menu, Choose MACRO, Then Visual Basic Editor



To get a Module, Go to INSERT and MODULE

Here is what needs to be Typed into the Module Window:

Function Velocity (Distance,Time)

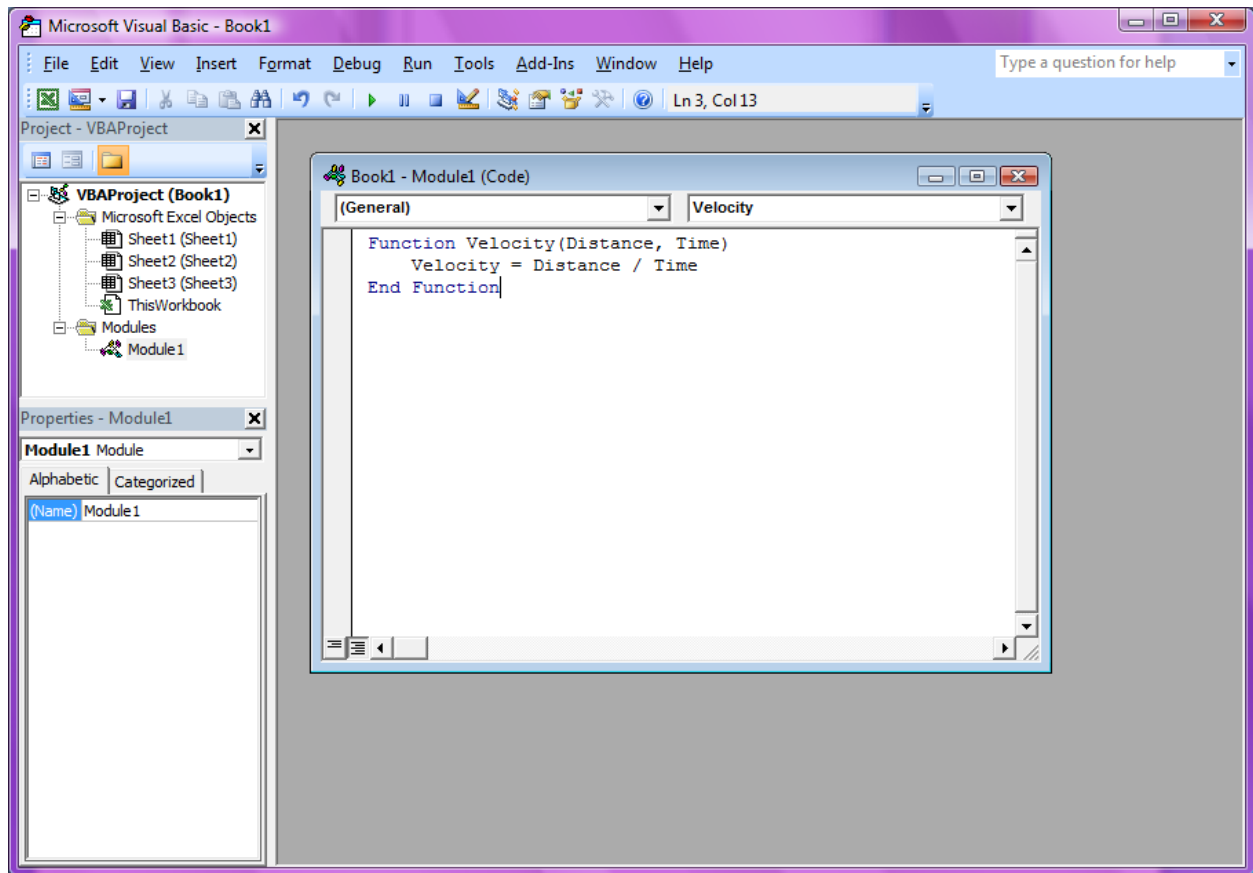
Velocity = Distance / Time

End Function

The First Line basically defines the function name and how many variables are in it (In this case, we created Distance and time)

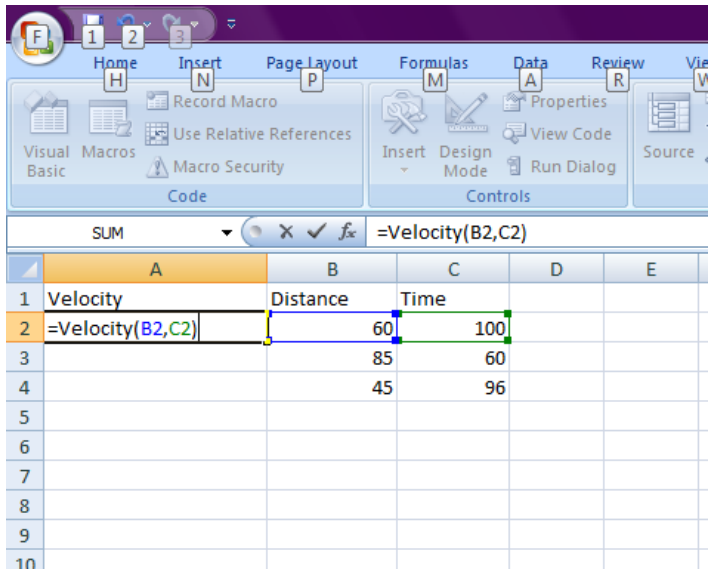
Line 2 Establishes the formula that VELOCITY will Calculate (Using the Variables we created in Line 1)

Line 3 Ends the Function.



Go To File and EXIT AND RETURN TO EXCEL...

Your function will now work for this Spreadsheet. Example:



RESULT:

Velocity	Distance	Time
0.6	60	100
1.416666667	85	60
0.46875	45	96

To Go another Function, simply go back to the visual basic editor and add a second function. Copy and paste these function from Visual Basic to and other worksheet in which you want to use them.